
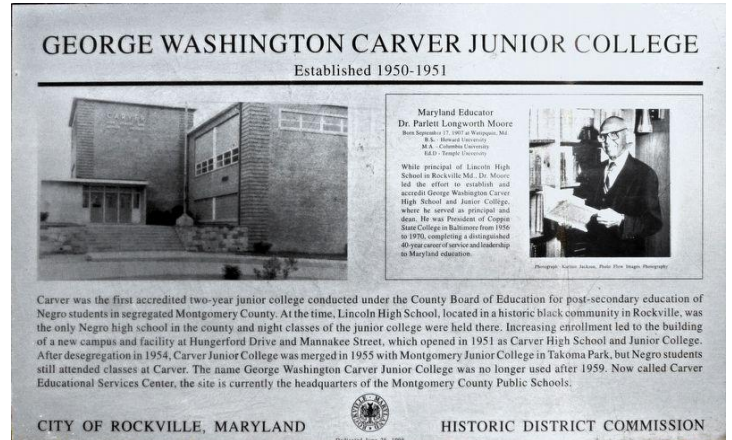




Rockville in Montgomery County, Maryland — *The American Northeast (Mid-Atlantic)*

George Washington Carver Junior College Established 1950-51

Inscription.  Carver was the first accredited two-year junior college conducted under County Board of Education for post-secondary education of Negro students in Montgomery County. At the time, Lincoln High School, located in a historic black community in Rockville, was the only Negro high school in the county and night classes of the junior college were held there. Increasing enrollment led to the building of a new campus and facility at Hungerford Drive and Mannakee Street, which opened in 1951 as Carver High School and Junior College. After desegregation in 1954, Carver Junior College was merged in 1955 with Montgomery Junior College in Takoma Park, but Negro students still attended classes at Carver. The name George Washington Carver Junior College was no longer used after 1959. Now called Carver Educational Services Center, the site is currently the headquarters of the Montgomery County Public Schools.



1. George Washington Carver Junior College Marker

Dedicated June 28, 1998, City of Rockville, Maryland, Historic District Commission

Erected 1998 by City of Rockville, Maryland, Historic District Commission.

Topics. This historical marker is listed in these

topic lists: [African Americans](#) • [Education](#).

Location. 39° 5.712' N, 77° 9.437' W. Marker is in Rockville, Maryland, in Montgomery County. Marker can be reached from Ivy League Lane. [Touch for map](#). Marker is at or near this postal address: Carver Educational Services Center 850 Hungerford, Rockville MD 20850, United States of America. [Touch for directions](#).

Other nearby markers. At least 8 other markers are within walking distance of this marker. [Haiti-Martin's Lane Community](#) (approx. 0.4 miles away); [Snowden Funeral Home](#) (approx. 0.6 miles away); [Rockville's First Colored School / Rockville's Second Colored School](#) (approx. 0.6 miles away); [Of By For](#) (approx. 0.6 miles away); [Clinton A.M.E. Zion Church](#) (approx. 0.6 miles away); [Rockville Town Square](#) (approx. 0.6 miles away); [Mr. T's](#) (approx. 0.6 miles away); a different marker also named [Rockville Town Square](#) (approx. 0.7 miles away). [Touch for a list and map](#) of all markers in Rockville.

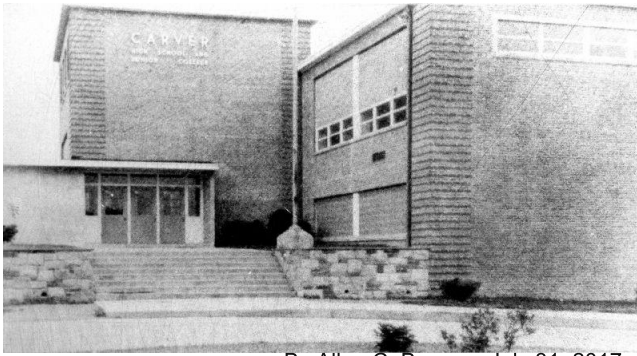


By Allen C. Browne, July 31, 2017

2. George Washington Carver Junior College Marker



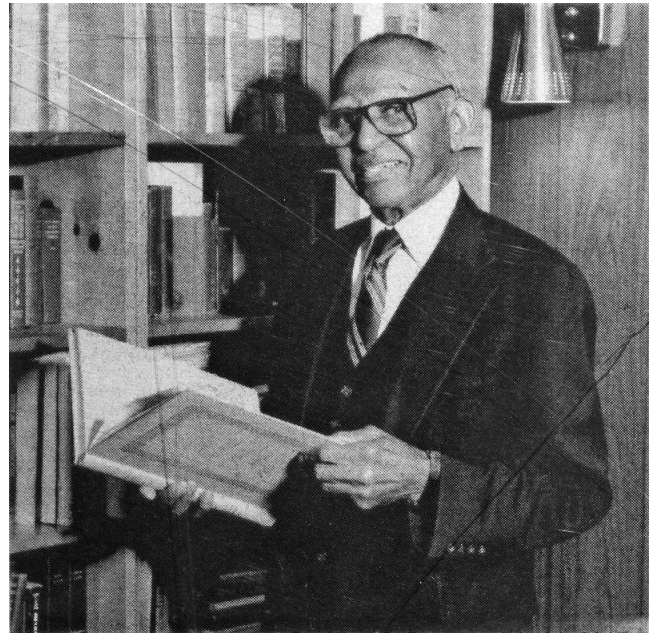
Click or scan to see
this page online



By Allen C. Browne, July 31, 2017

3. Carver High School and Junior College

Close-up of photo on marker



By Allen C. Browne, July 31, 2017

4. Maryland Educator Dr. Parlett Longworth Moore

Born September 17, 1907 at Wetipquin, Md.

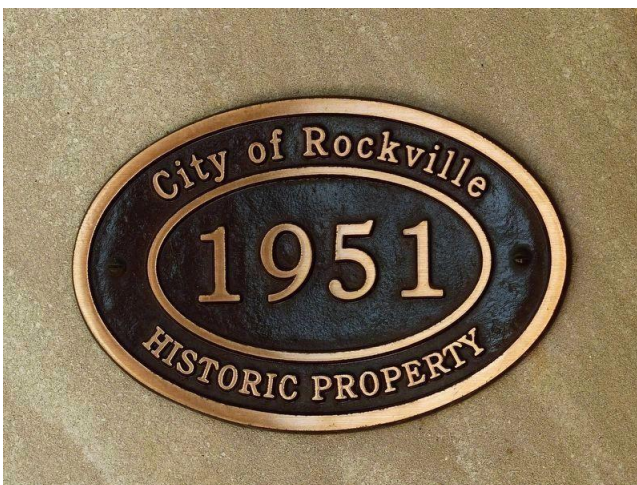
B.S. - Howard University

M.A. - Columbia University

Ed.D. - Temple University

While principal of Lincoln High School in Rockville, Md., Dr. Moore led the effort to establish and accredit George Washington Carver High School and Junior College, where he served as principal and dean. He was President of Coppin State College in Baltimore from 1956 to 1970, completing a distinguished 40-year career of service and leadership to Maryland education.

Close-up of photo on marker



By Allen C. Browne, July 31, 2017

5.

1951
Historic Property
City of Rockville



By Allen C. Browne, July 31, 2017

6. Carver Educational Services Center

Credits. This page was last revised on August 4, 2017. It was originally submitted on August 1, 2017, by Allen C. Browne of Silver Spring, Maryland. This page has been viewed 186 times since then and 17 times this year. **Photos: 1, 2, 3, 4, 5, 6.** submitted on August 1, 2017, by Allen C. Browne of Silver Spring, Maryland. • Bill Pfingsten was the editor who published this page.

m=106396

[Copyright © 2006–2021, Some rights reserved.](#) — [RSS Feed](#) — [Privacy Policy](#) — [Terms of Use](#) — [About Us](#) — [Contact Us](#)